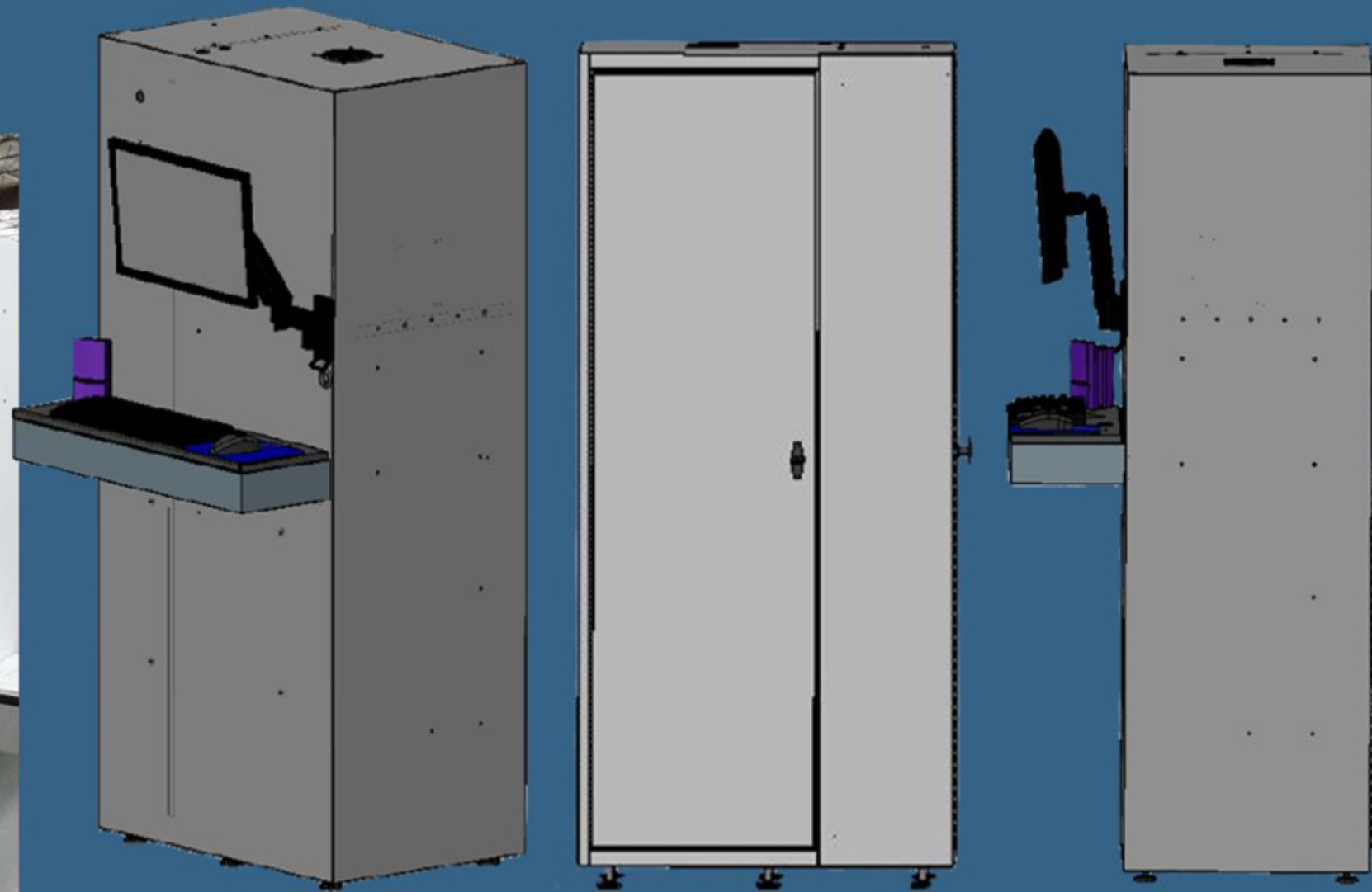


REC4

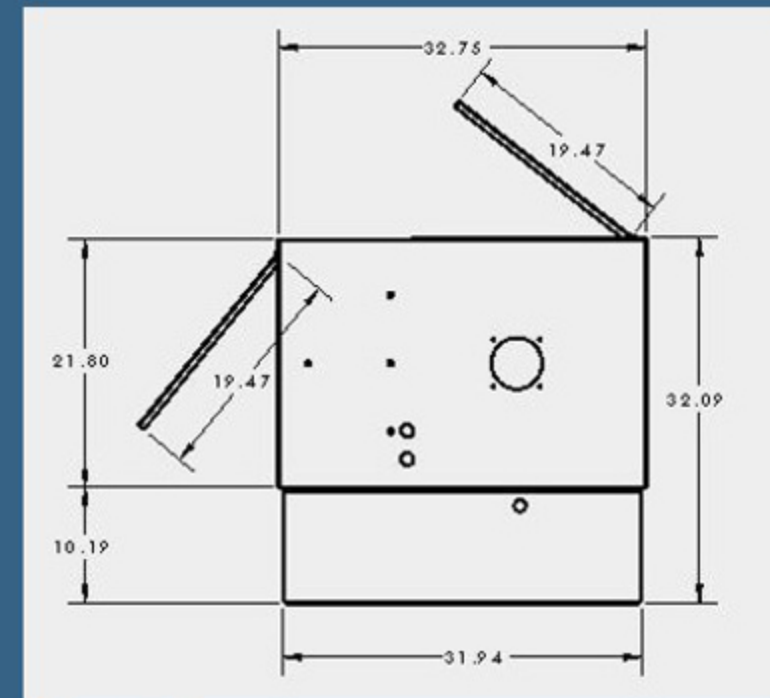


Utility Support Package (RSP) Required with Recortest 4

REC4 Comes with our largest PLC , the most valves, and the most options of any of our standard test systems. Fully contained powder-coated test console with Windows based Operating system. Allows serial # entry while a cylinder is testing. The console can be configured for the testing of cylinders alternatively or simultaneously. Networking capabilities for cylinder database that can be maintained separate from the console and used to pre-enter cylinder data.

The Test System components designed for the REC4 platform are centered on over 50 years experience in the industry and include components which have proven themselves to be the most reliable and repeatable over time.

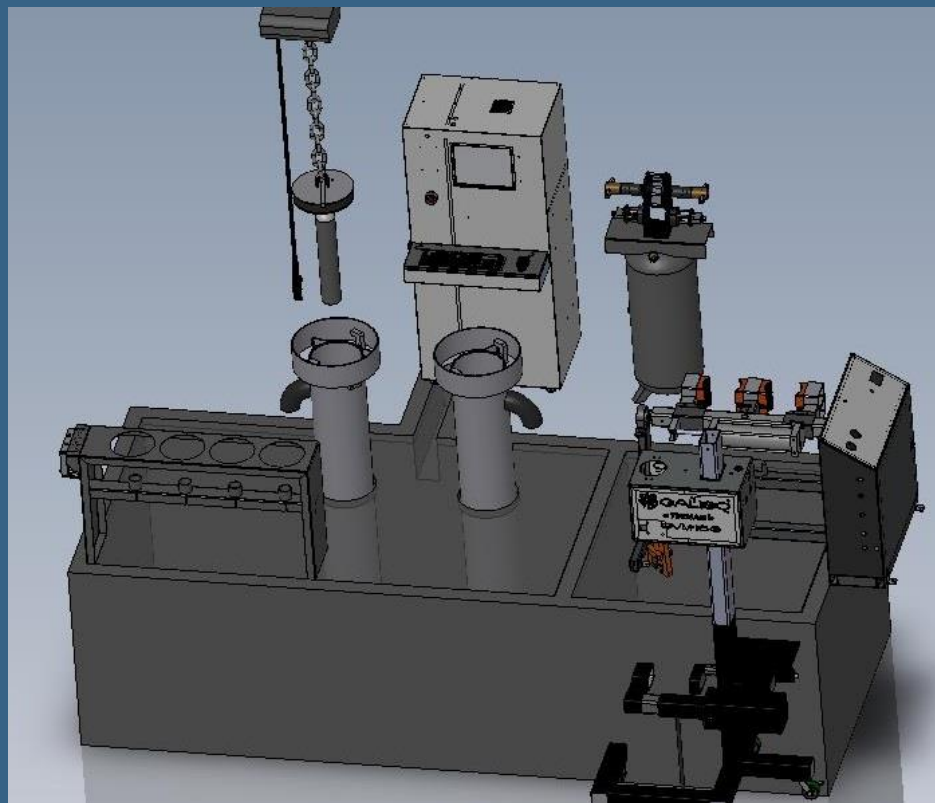
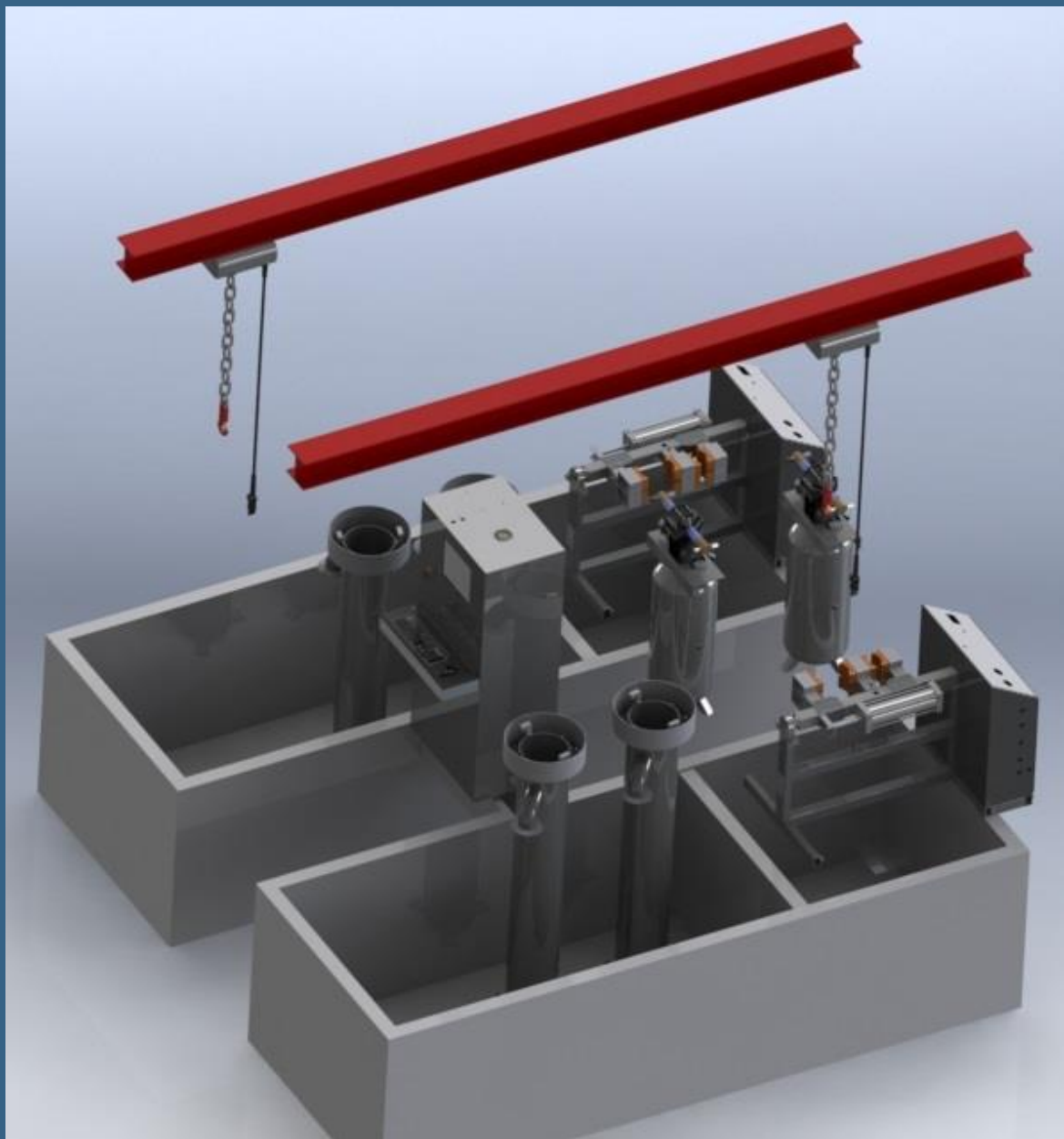
Internet connectivity enhances Galiso's ability to communicate with and properly service our customer's system. It gives our customer the opportunity to upgrade their software and system over the internet.



Electrical	5 Amps @ 110v or 220v 50/60HZ
Water	City Water Pressure
Air.....	90psi Control Air



22 Ponderosa Ct
 Montrose, CO 81401
www.galiso.com (800)854-3789



Configurations:
Water Jacket 1 – 4+ Jackets
Recirculation Automated with Gantry
Direct Expansion
Water Jacket w/ Direct Expansion

22 Ponderosa Ct
Montrose, CO 81401
www.galiso.com
(800)854-3789

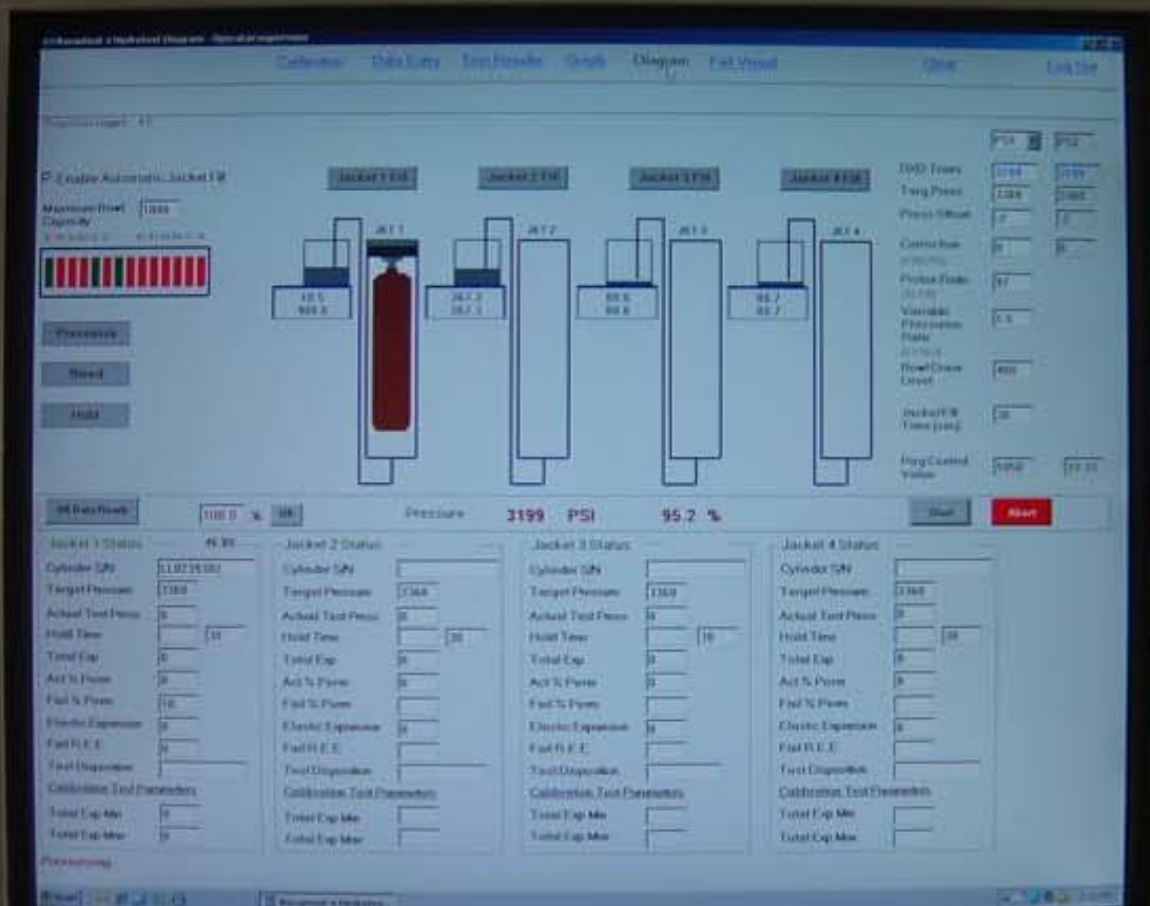


REC4VIDEO

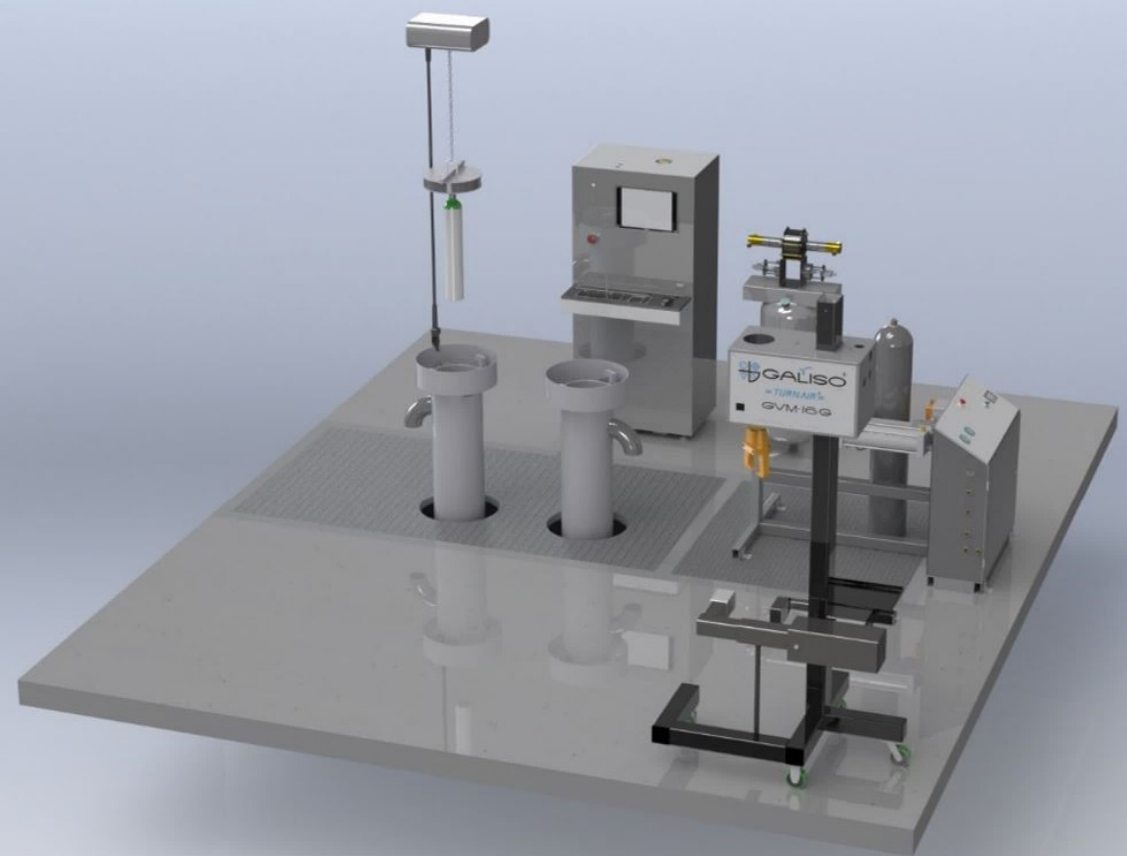
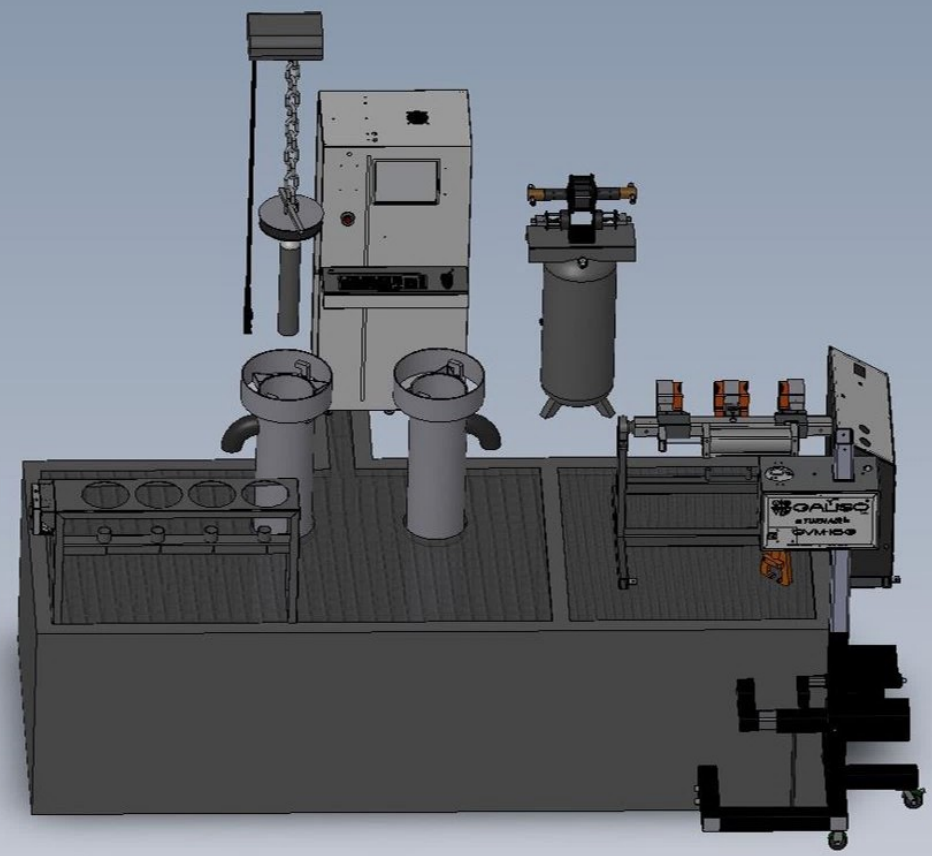
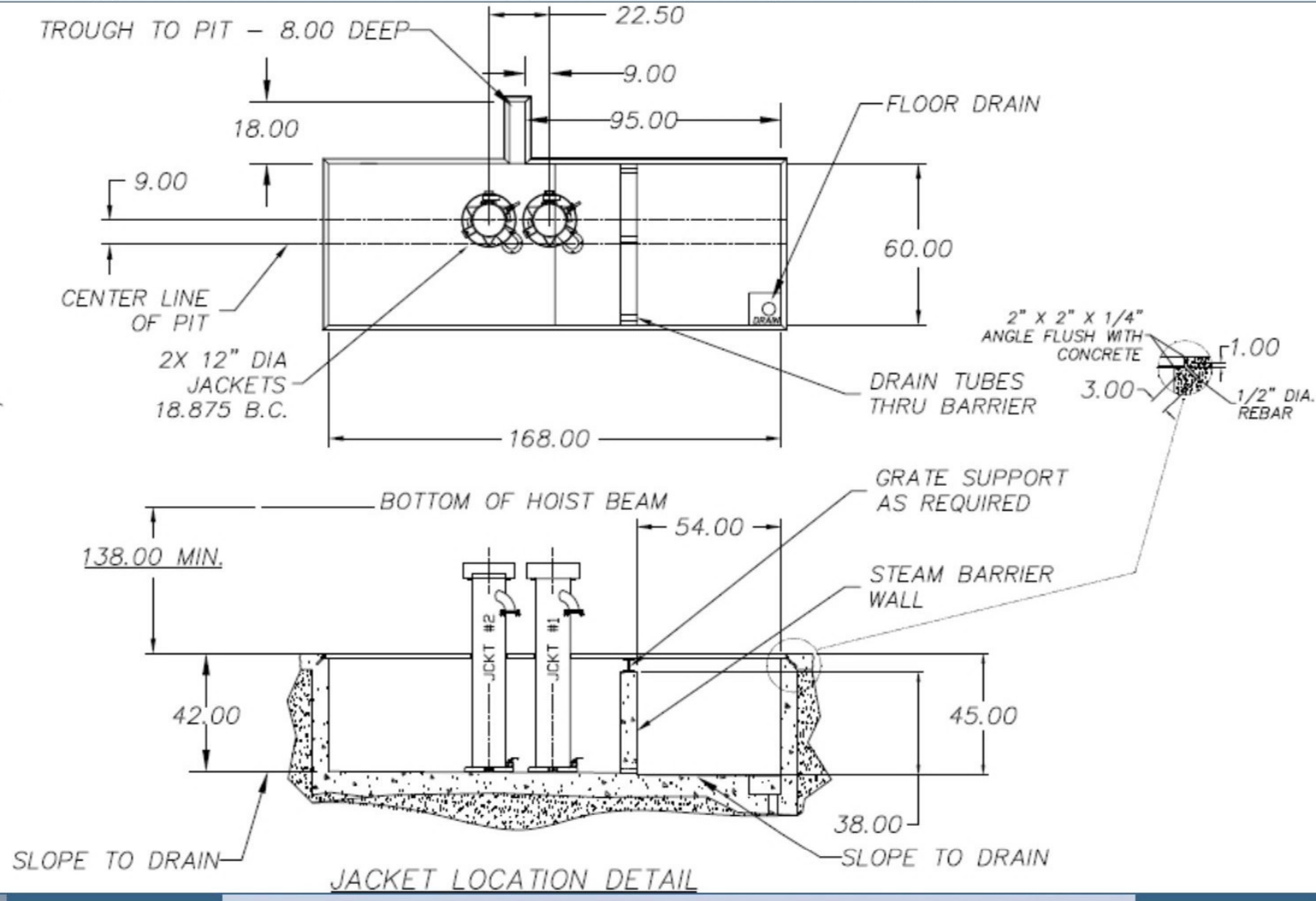
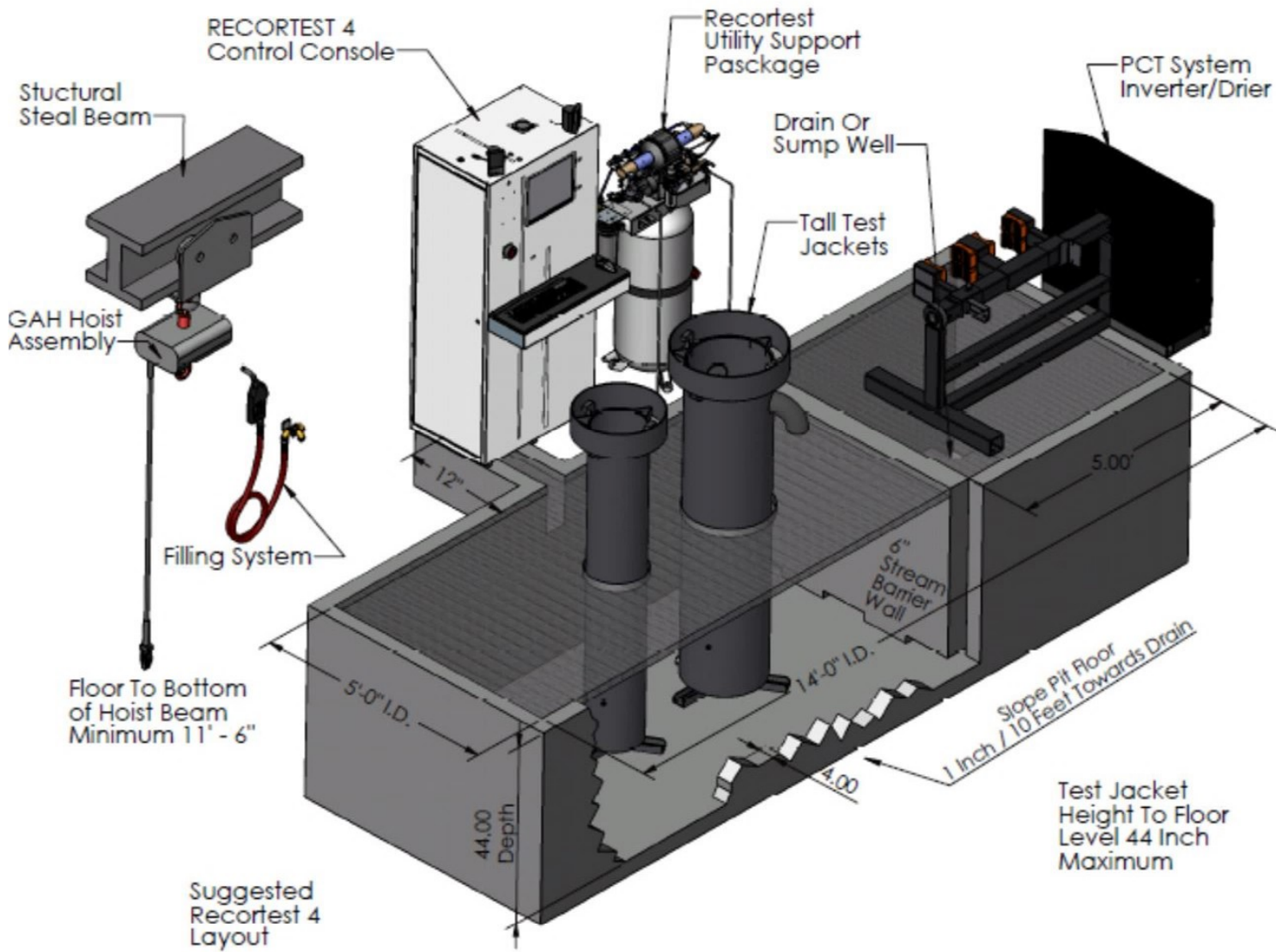




Multiple Weigh Bowl and Valve Options



Test Pits are designed to go into the floor (Typically 44" deep). Floor level is shown as approximately mid jacket height.



RSP

High Pressure Water Pump Support Package provides rapid pressurization of 2 cylinders alternately or simultaneously at same test pressure.



E/P Regulator provides Computerized Pump Air adjustment (DAP systems only)

Double Acting Pump provides flow by pressurizing on the forward and back stroke which almost doubles pump output capacity



Clean Air Package Cleans Compressor Air to ISO8573 Class 1 Air Extending Life of the pump – Auxiliary Air Port for providing clean dry air to your PCT Inverter

High Flow Electric Motor Driven triplex pumps
12.4gpm@5,800psi
4gpm@16,000psi

Pressure's Available	flow@50% Capacity	flow@100% Capacity
•RSP45 - 45,000psi	(22,500psi) .21gpm	(45,000psi) .03gpm
•RSP35 - 35,000psi	(17,500psi) .29gpm	(35,000psi) .05gpm
•RSP30 - 30,000psi	(15,000psi) .32gpm	(30,000psi) .1gpm
•RSP25 - 25,000psi	(12,500psi) .37gpm	(25,000psi) .2gpm
•RSP10 - 10,000psi	(5,000psi) 1gpm	(10,000psi) .5gpm
•RSP6 - 6,000psi	(3,000psi) 1.8gpm	(6,000psi) 1gpm
•RSP1 - 1,000psi	(500psi) 7gpm	(1,000psi) 5gpm

•Dimensions.....79cm/31" L x 71cm/28" W x 142.2cm/56" H

•Water..... City Water Pressure

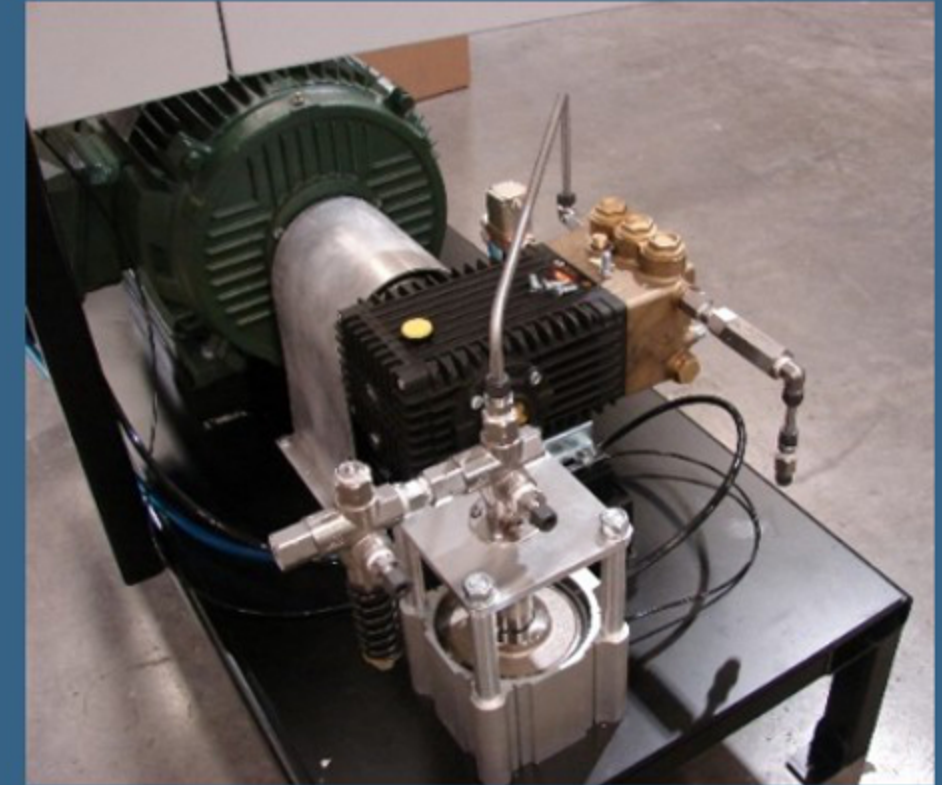
• Air Req..... 90-110 PSI/ 6.2 – 7.6 bar @ / 56CFM / 1.58 Cubic Meters per minute

• Air Reservoir..... 30 gallon/ 113.6 liters @ 175 PSI maximum / 12 bar

•Air Filtration.....5 micron

EPO

Electric Pump Option Package



Triplex pump technology has been in use by Galiso for over 15 years. These pumps offer high flows and long life capability. Pump packages for these pumps are now standard and offer a 4x increase to pressurization volume over double acting pumps with similar pressure.

- 1) 20HP Electric Pump up to 75hp Electric pump
- 2) Triplex Pump 7,200psi 16.2lpm/4.3gpm standard
Current Design Pressures up to 20k
- 3) E/P Regulator pressure control pressure bypass valve

Optional with Enclosure



22 Ponderosa Ct

Montrose, CO 81401

www.galiso.com (800)854-3789

