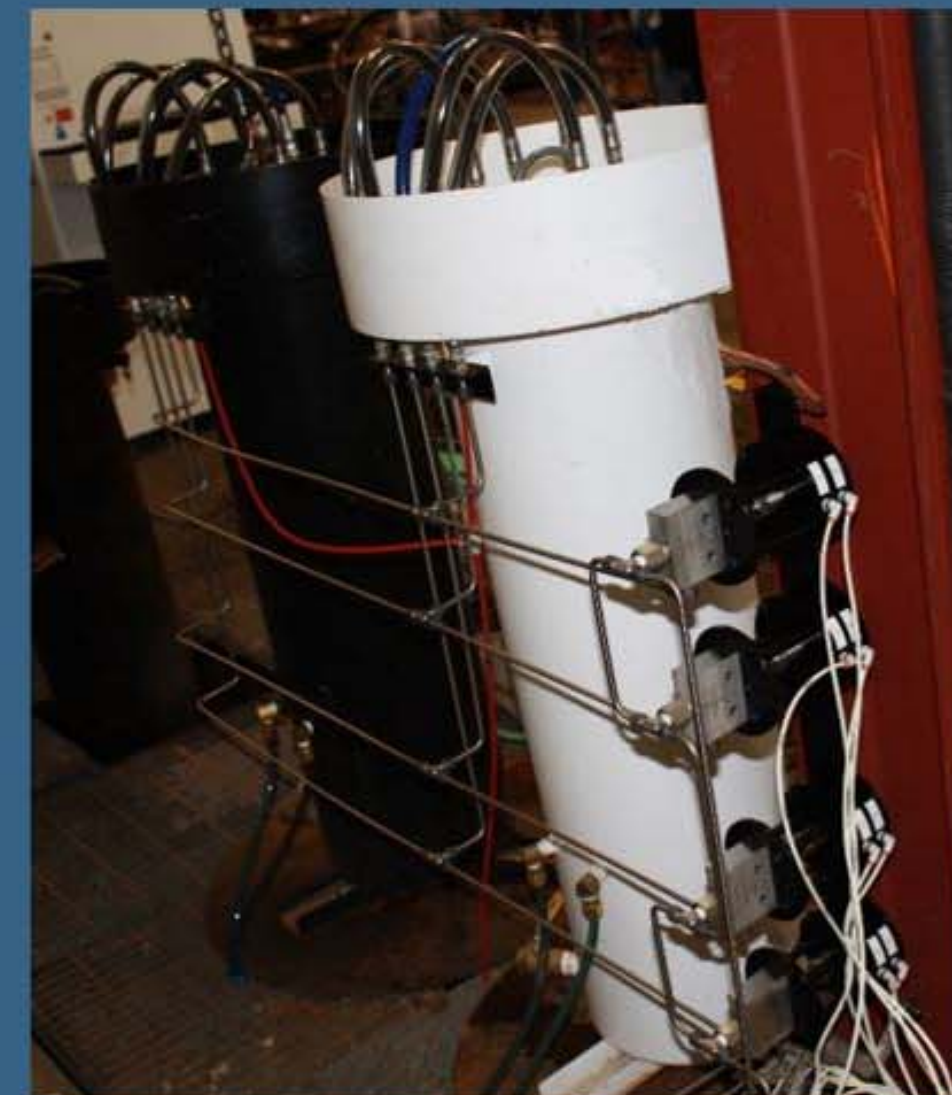


Multi-Test System

- Windows Professional PC Operator Interface
- Uses standard components (Multiport head, Multiple Snotrik Valves, Standard Test Jacket)
- Can use standard Single Port Test Head
- 19" Flat panel display monitor
- Software allows for auto-sequencing so information does not have to be re-entered
- Test data is stored locally and in one additional network database location.
- Use with Small straight thread cylinders



Multi-Test System – Tests 8 small cylinders in sequence, 2 at a time



Specifications

- Console dimensions 29" L x 40" W x 56" H.
Electrical 110v 60 Hz
Pump.....10,000psi max pressure
Pneumatic.....100psi
Pump Displacement..... 4L/Min@4500psi
Cylinder Throughput.....40 per hour (based Med E 25 ¼" x 4 ¼" dia cylinder)
Max Cylinder Dimension.....32"L x 4.75" Diameter



22 Ponderosa Ct

Montrose, CO 81401

www.galiso.com (800)854-3789