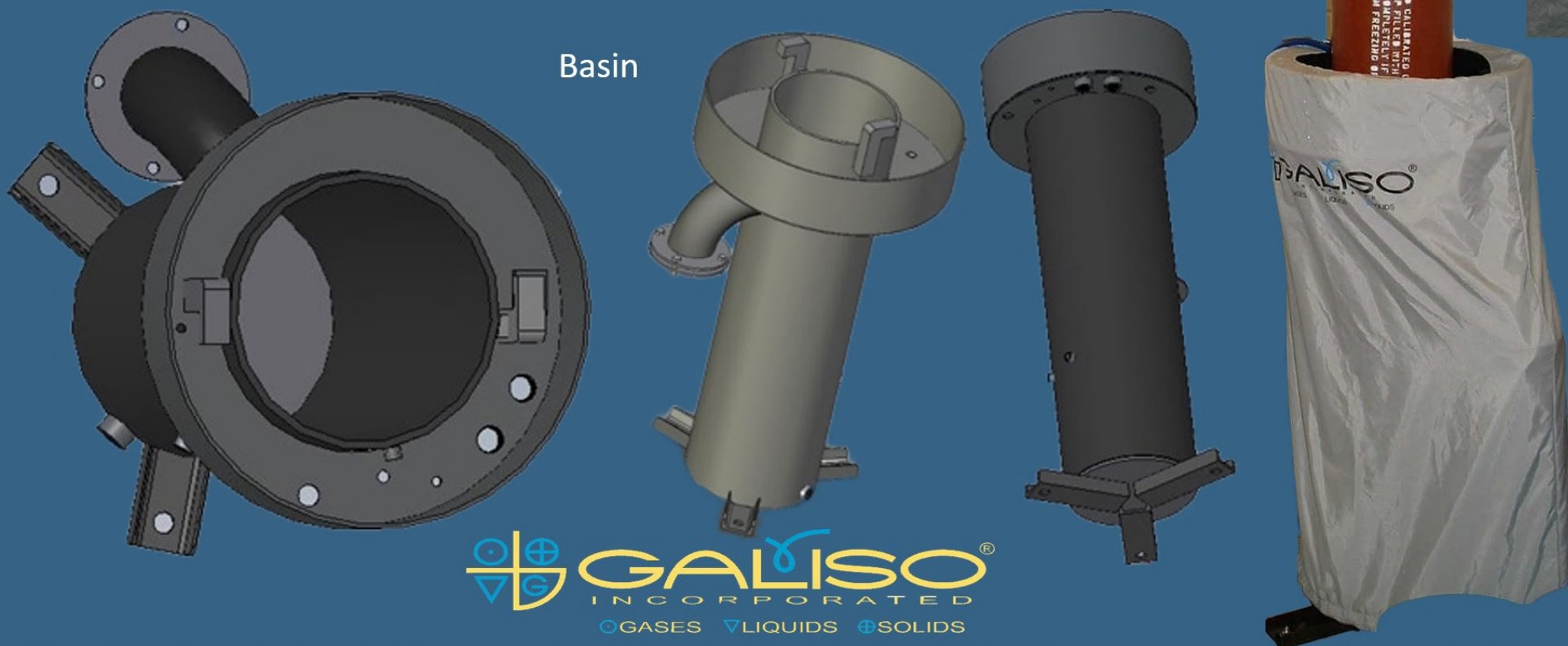


GTJ Hydraclose Test Jackets

The GTJ, Galiso Hydraclose Test Jacket is an integral component of most Galiso test systems. The GTJ water jacket is specially designed to accommodate the Hydraclose Test Head which seals the jacket pneumatically. This design will give you many years of service without worry of a leaking head seal to ruin your test.

Features:

- The Hydraclose Test Jacket contains a safety locking device, one or more burst disk crystals, (depending on the diameter of the jacket) a drain valve, a splash shield and connection hoses that attach to the Hydraclose Test Head.
- The Hydraclose Test Jacket is available in 12", 14", 18", 24", 30" & 36" nominal diameters.



The Standard test jacket has a drain valve, a basin splash shield and connection hoses that attach to the Test Head. A standard tall is 83 1/4" overall height for testing cylinders 68 1/2" in height. A standard short is 47 1/4" overall height for testing cylinders 32 1/2" in height.

The test jacket can be custom made to fit any size cylinder requiring a water jacket test.

Options:

- POR15 coating is an option on steel jackets which will help against corrosion



Steel



Stainless



Maximum Test Pressure of cylinder: 11,000psi, higher pressure test jackets available by special order.