

**Optical Plus Galiso P/N 85-11-0077**



- Features:**
- Adjustable Focus
  - Adjustable Light Intensity
  - 4x Magnification
  - Commonly used for inspection of SCUBA, Medical, SCBA, AFV, industrial Specialty Gases, and CO2
  - 360° rotation within the threads
  - Full vertical adjustment

**Inspection Items**



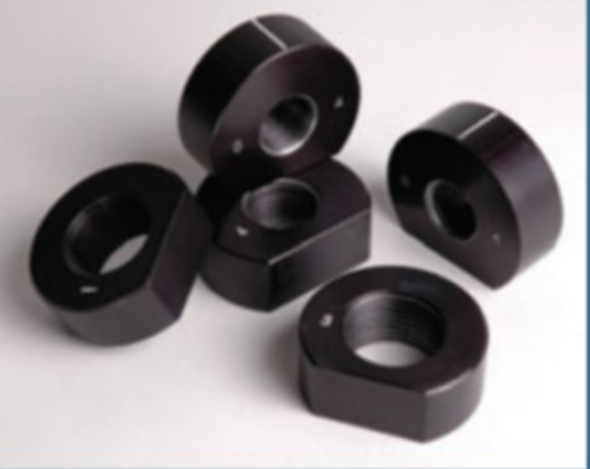
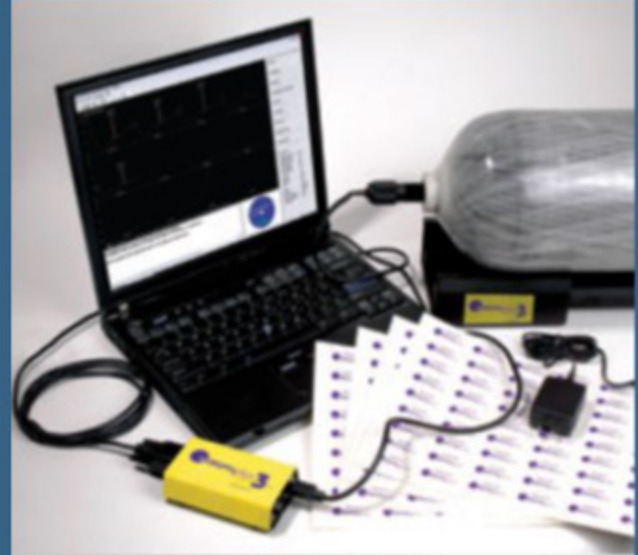
22 Ponderosa Ct  
Montrose, CO 81401

[www.galiso.com](http://www.galiso.com) (800)854-3789

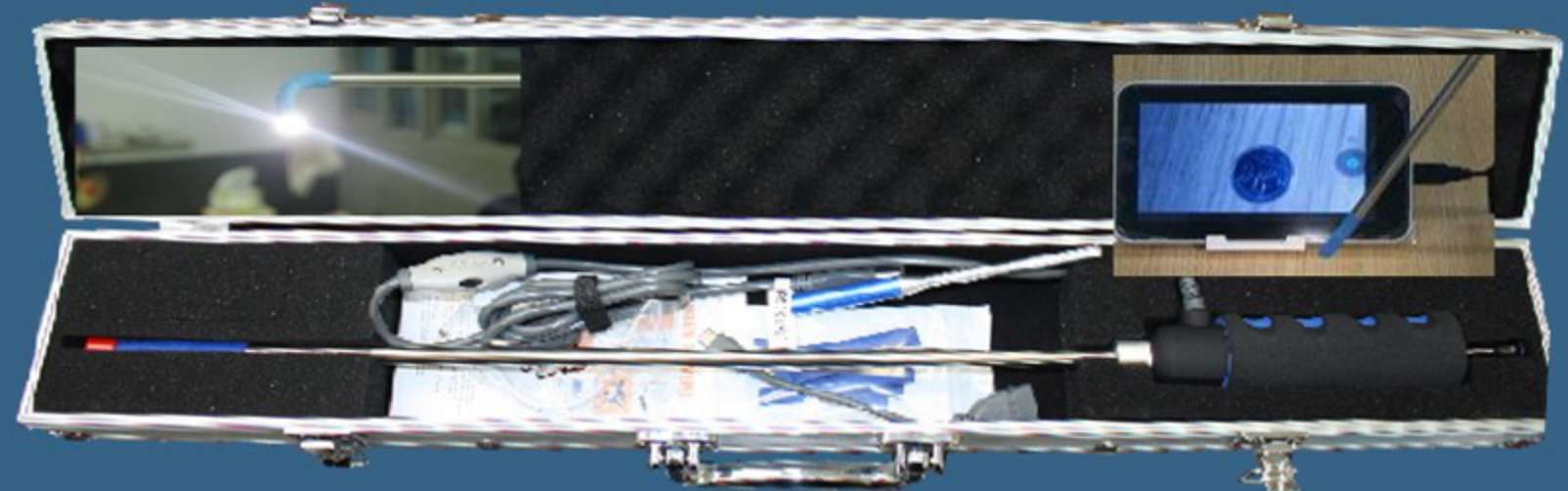


68-11-1750 1ea 7/16", 9/16", 5/8" OD 2x mirrors.

**Visual Plus Galiso P/N 84-11-1100**



**Articulating USB Borescope 85-11-0013**



68-41-3103B  
Reference Pit Gauge



68-31-3106  
Dial Pocket Pit Gauge,



**EDDY CURRENT**  
Eddy Current Integration  
Galiso Test Software Video

68-31-3105  
Pit Gauge, Stainless  
\*Also available in Metric



ACETYLENE REQUALIFICATION KIT	ACETYLENE REQUALIFICATION KIT
Contents	Purpose <sup>(1)</sup> Of Tool
<b>CLEARANCE GAUGES</b>	<b>CLEARANCE GAUGES - MEASURE SPACE FILLER TO SHELL</b>
0.041"	0.041" - BOTTOM FUSE PLUG GAUGE <sup>(2)</sup>
0.060"	0.060" - MC & B CYLINDERS, CENTER WELD WITH CaSi FILLER
0.080" <sup>(1)</sup>	0.080" - 24" LONG CYLINDERS, CENTER WELD WITH CaSi FILLER
0.084"	0.084" - 30" TO 42" LONG CYLINDERS, CENTER WELD WITH CaSi FILLER
0.090"	0.080" - 8 CYLINDERS OF ONE PIECE SHELL OR CHARCOAL FILLER
0.120"	0.120" - 24" LONG CYLINDERS OF ONE PIECE SHELL OR CHARCOAL FILLER
0.125"	0.125" - 30" TO 42" LONG CYLINDERS OF ONE PIECE SHELL OR CHARCOAL FILLER
<b>6" FLEXIBLE STAINLESS STEEL SCALE</b>	<b>SCALE - TO MEASURE SIZE OF DAMAGE</b>
<b>MINI MAGNALITE AAA</b>	<b>FLASHLIGHT - TO VIEW INTO WELL</b>
<b>CREVICE PIT GAUGE</b>	<b>CREVICE PIT GAUGE - TO MEASURE CORROSION IN CREVICE</b>
<b>ROCKER PIT GAUGE</b>	<b>ROCKER PIT GAUGE - TO MEASURE DEPTH OF PIT</b>
<b>DENTAL MIRROR - 3/4"</b>	<b>MIRROR - TO VIEW CLEARANCE IN WELDING SIZE</b>
<b>DENTAL MIRROR - 1/2"</b>	<b>MIRROR - TO VIEW CLEARANCE IN B OR MC</b>
<b>6" AWL (PROBE)</b>	<b>AWL - TO GENTLY PROBE FILLER FOR BREAKDOWN</b>
<b>NEEDLE NOSE PLIERS</b>	<b>PLIERS - TO REMOVE SCREEN &amp; FELTS</b>
<b>PI TAPE - LUFKIN</b>	<b>PI TAPE - TO DETERMINE CYLINDER SIZE - DIAMETER x LENGTH</b>
<b>THORPE PIT GAUGE - IN LID OF KIT</b>	<b>PIT GAUGE - TO MEASURE DEPTH - PITS, CUTS, DENTS, ETC.</b>
<small>(1) 0.084" GAUGE MAY BE USED IN LIEU OF 0.087"</small>	<small>(1) SEE G.A. PAMPHLET C-13 FOR DETAILS. (2) 13 PERMITS BOTTOM MEASUREMENT. CERTAIN CASES.</small>

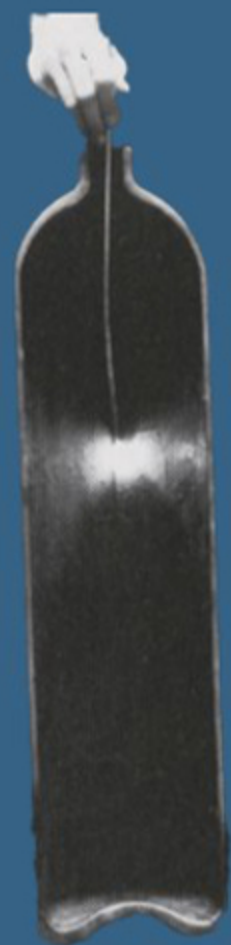


Acetylene Requalification Kit  
68-11-1756



# Opti-lite

High Intensity 150W Light for viewing inside cylinders before and after hydrostatic test.



Drop Light



Optilite



- Box
- 85-11-0023  
Illuminator Box, 110V
- 85-11-0024  
Illuminator Box, 220V
- 85-11-0055  
Illuminator Box, 220v CE

- Guides
- 85-11-0060  
1/4" x 20'
- 85-11-0061  
1/8" x 5'
- 85-11-0062  
1/8" x 10'
- 85-11-0063  
1/4" x 5'
- 85-11-0064  
1/4" x 10'
- 85-11-0066  
1/8" x 5' Hypo Tube
- 85-11-0088  
1/8" x 10' Hypo Tube
- 85-11-0028  
Halogen Bulb

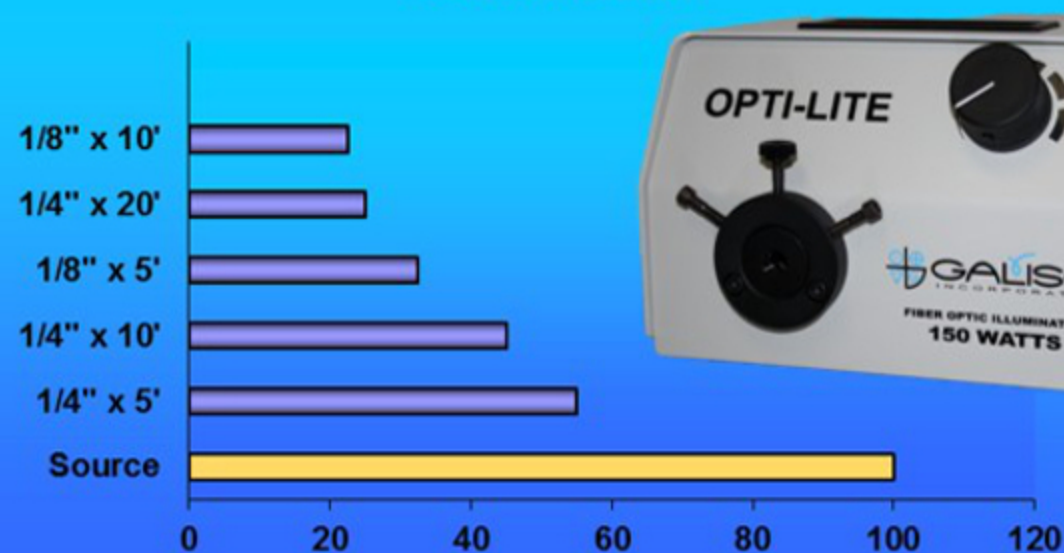


22 Ponderosa Ct

Montrose, CO 81401

[www.galiso.com](http://www.galiso.com) (800)854-3789

% Light Transmission



1/4" SST Sheath



1/8" SST Sheath



1/8" hypo tube Silicone Sheath

Largest Outside Diameter



.5"



.375"



.2"