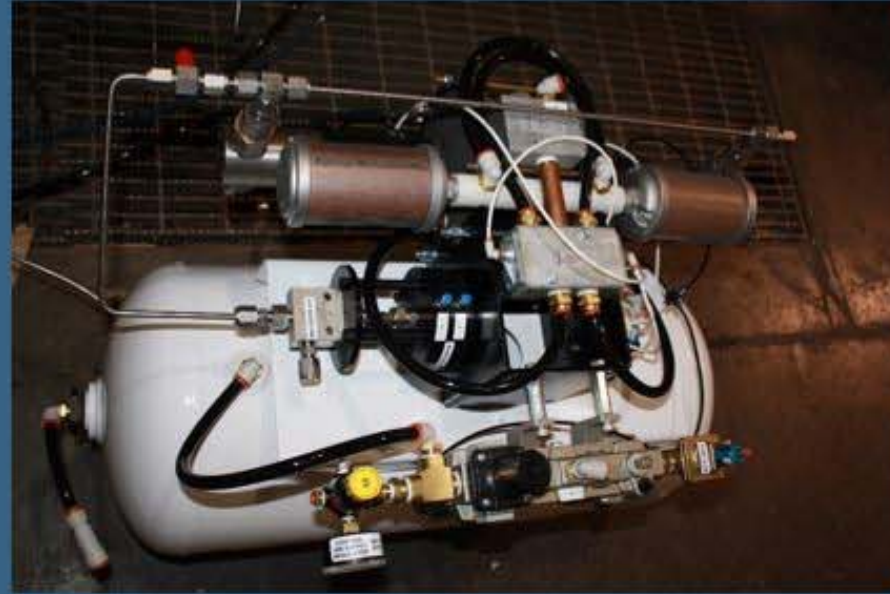


GBT Galiso Burst Console



The Burst Test systems are configured for manual operation or computerized operation. Optional Double Acting Pump for higher flow. Optional Expansion Measurement Computerized allows you to save test data and graph burst curve. All consoles feature Analog gauge with Max pointer, Bleed Valve, and Air Receiver Tank.



Specifications

- Console w/ Skid dimensions 40" L x 26" W x 40" H.
- ElectricalComponents 110v / 60hz or 220v 50/60hz
- Air Requirements..... 6.2 - 7.6 bar (90-110 psi) @ 56 SCFM
- Test Pressures Available ... Up to 60,000psi

